

Rare mixed use all contiguous one owner opportunity



Golf Course included - \$25,000 per acre

\$25,000 Per acre. Seller will subdivide, but price will change depending on size of split. Nice assemblage of land along the State Road 39 corridor between U.S. 40 and Interstate 70. Land is suitable for large box distribution centers, small flex developments, mixed use industrial, single family, multi-family and retail development. Deer Creek Golf Club also part of listing, both land and business. Hendricks County is open to discussing the creation of a TIF district in this area. This property is located approximately 3 miles north of the I70 interchange.

**Albertson
& Son** nc

(317) 203-5062

Jointly marketed by:

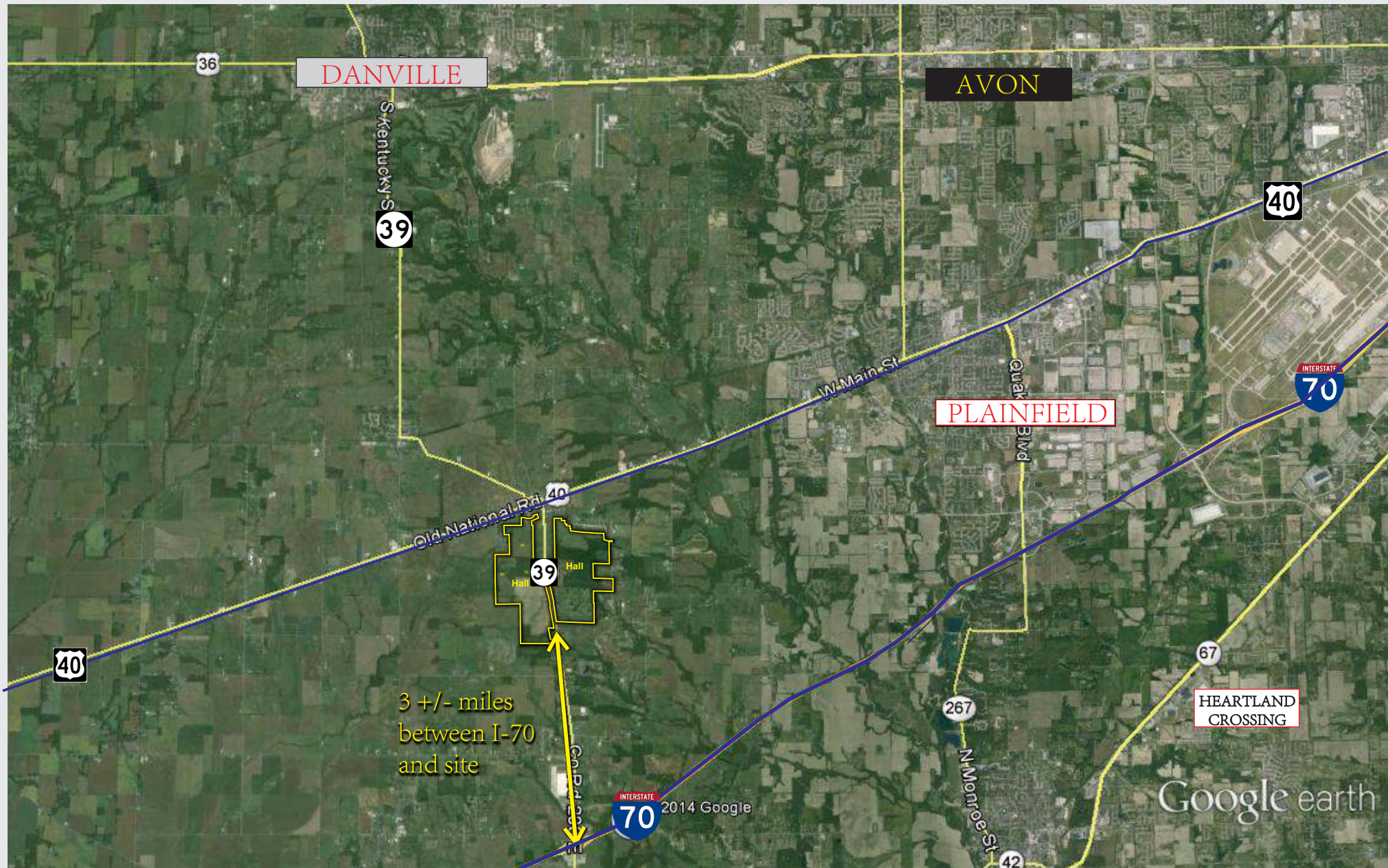
**VORNHOLT
& ASSOCIATES**



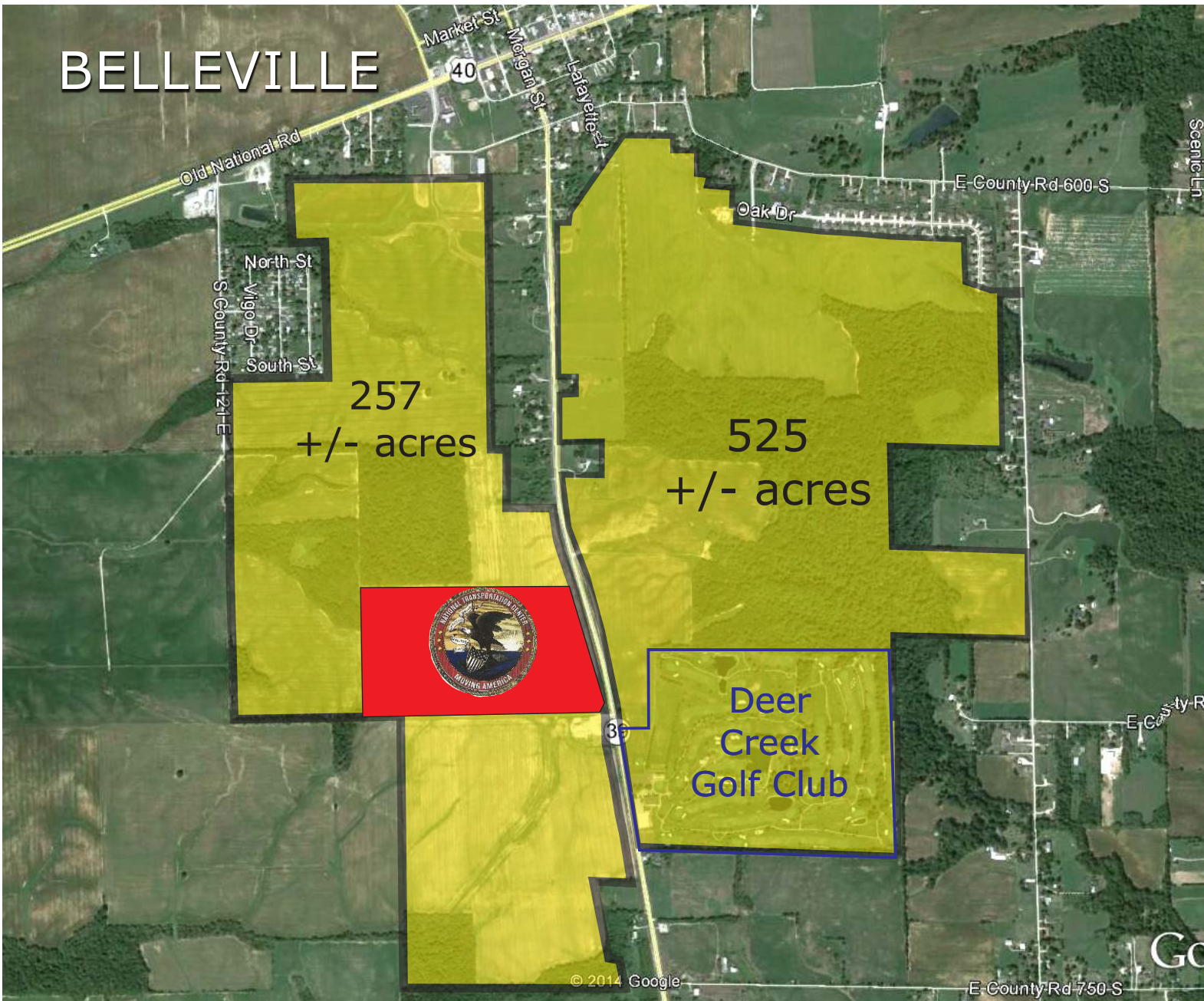
landman1031@gmail.com
(317) 431-2672

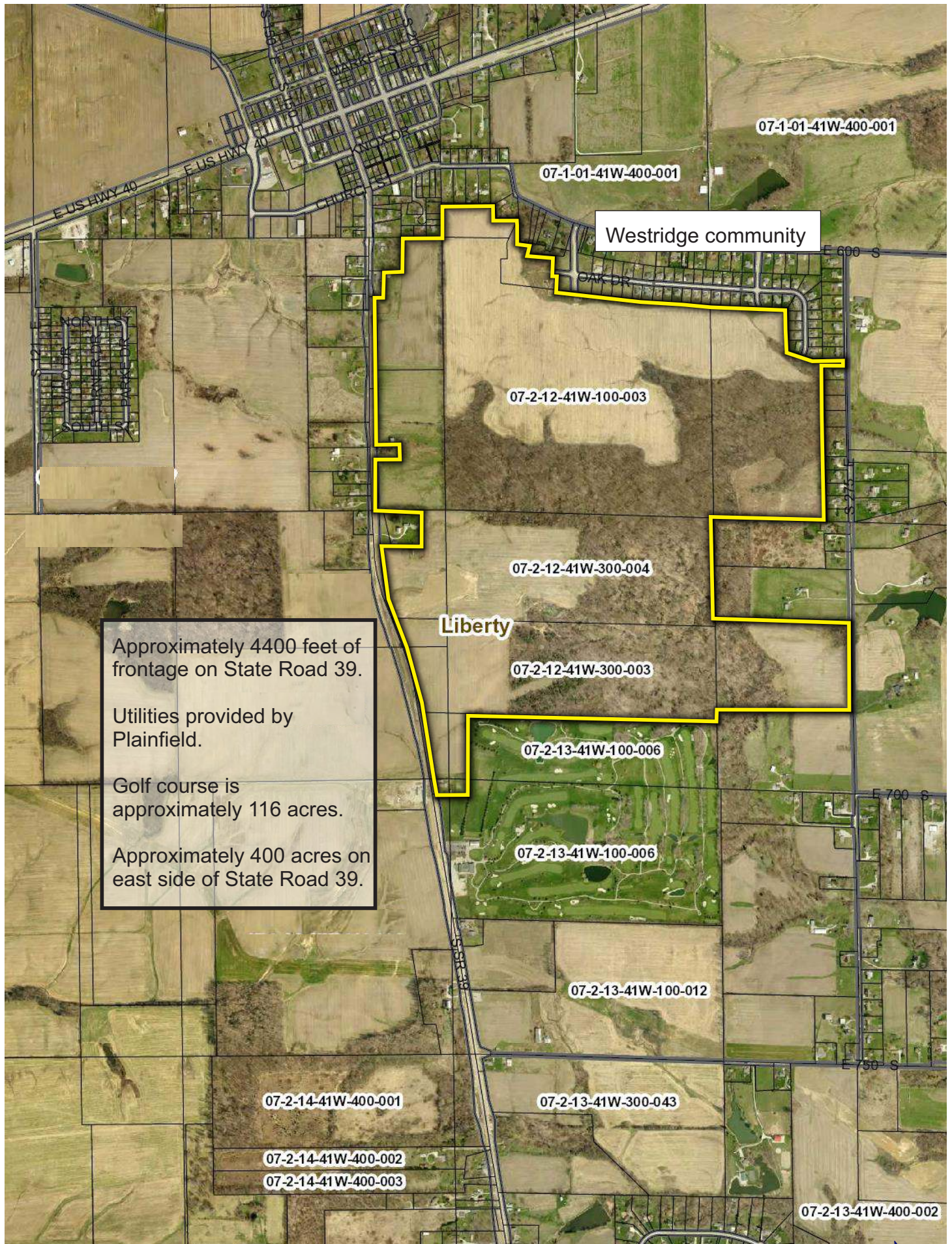


Hendricks County - Belleville Area



BELLEVILLE





Estimates of the potential development at the I-70 and SR 39 interchange identified for Industrial business. Currently there are 4 main developments:

Westpoint Business Park

555 acres
Potential for 6,293,000 sf under roof
Assuming 1 employee for every 4,500 sf in Logistics space - Approximately 1,398 employees

70 West Commerce Park

1000 acres
Potential for 10,422,000 sf under roof
Assuming 1 employee for every 4,500 sf in Logistics space - Approximately 2,316 employees

Crossroads Commerce Park

200 acres
Potential for 3,582,400 sf under roof
Assuming 1 employee for every 4,500 sf in Logistics space - Approximately 796 employees
Also has a small retail component

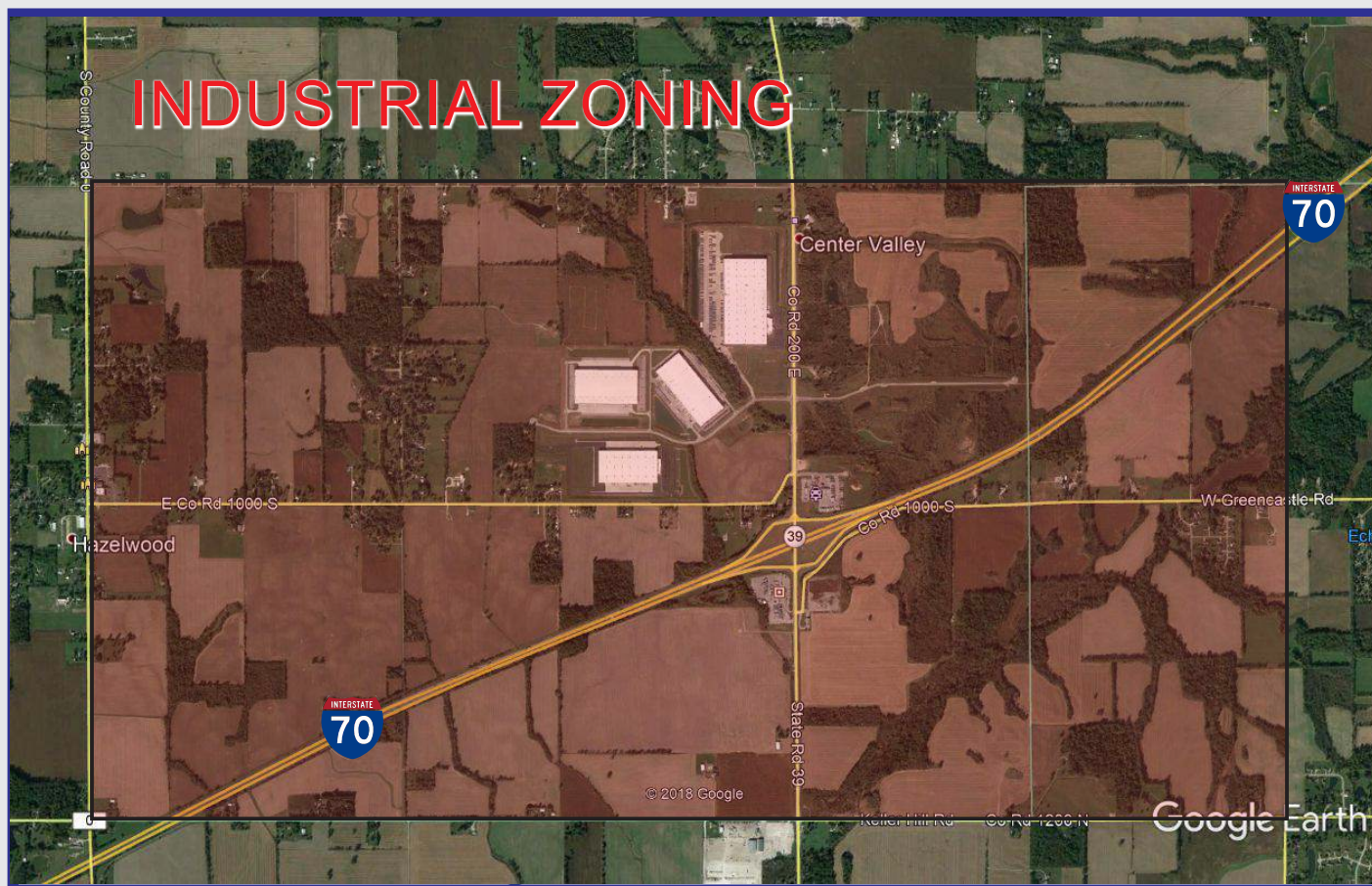
39 Logistics Park

100 acres
Potential for 1,897,200sf under roof
Assuming 1 employee for every 4,500 sf in Logistics space - Approximately 422 employees

In Total
1,855 acres

Potential for 22,194,600 sf
Assuming 1 employee for every
4,500 sf in Logistics space -
Approximately 4932 employees

Interstate 70 and State Road 39 interchange Clayton, Indiana



**2000 +/-
acres of proposed
industrial development**

**Approximately
22,000,000 s.f.
projected under roof**

**Approximately
4500-5000 employees**



[317] 203-5062

SOURCE:



Hendricks County Economic Development Partnership



jerry@vornholtprop.com